



[Trouble viewing this email? Click here to view as a webpage](#)

## Meet Eustace

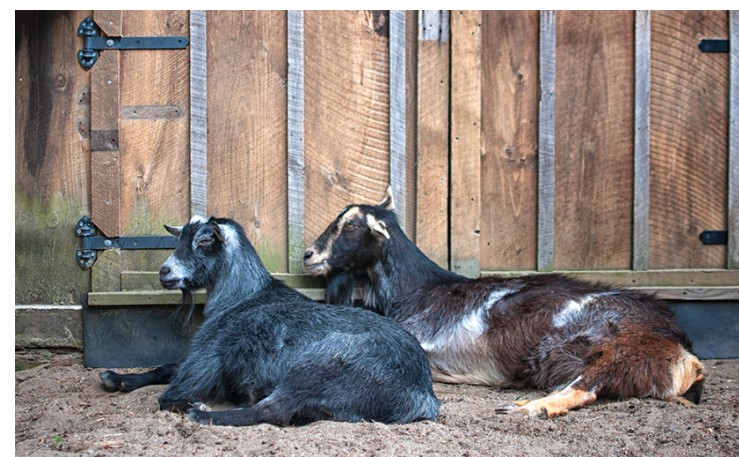


Eustace is a lovable black and white pygmy goat. He arrived at the farm in July 2007, as a baby goat.

As he loved to jump and climb on whatever he could find, including the horse at his former home, he was severely disciplined by his caretaker. Fearful for him, the caretaker's spouse smuggled Eustace out of a bad situation and got him to Winslow Farm.



Once free from restrictions, Eustace continued his climbing activities at the farm, including scrambling over gates and fences, as well as jumping on the top of the goat shed. One day, somehow, he managed to climb up on the roof of the big barn, giving the staff a heart attack, but he nimbly made his way through the window and down the stairs safely.



Apache, who also arrived in 2007 as a baby, and Eustace are both now 14 years old. They are currently the oldest goats at the farm. Eustace is very protective of Apache and they are snuggle buddies in the cold weather.

Eustace loves attention and is a very affectionate goat. He is also a playful fellow. His best friend is Simon, our large white goat. Despite Eustace's age, the two goats play often. Fenway, a very shy goat, is also one of Eustace's play friends.



Debra White, owner of Winslow Farm, notes of Eustace, "He was a little ball of happiness and still is." All who meet this wonderful boy can agree wholeheartedly.



## Volunteers Wanted

Winslow Farm is seeking volunteers who have experience working with horses. Help is needed for a few hours on weekdays. If interested, please contact Debra White at:

508-285-6451

## The Betty White Challenge



You may have heard about the upcoming #BettyWhiteChallenge, a viral campaign urging Betty White fans and animal lovers across the nation to donate to shelters and rescues in honor of her 100th birthday on January 17th.

Betty was one of the biggest advocates for animals, so we invite you to be part of this campaign.

Together, we can help make Betty White's legacy live on. Please consider a donation to Winslow Farm on January 17th, in memory of the beloved Betty White.

Photo: (2012 Charles Sykes/AP)

[DONATE TO WINSLOW FARM](#)

**WINSLOW FARM ANIMAL SANCTUARY**  
37 Eddy Street, Norton, MA  
509-285-6451  
[www.winslowfarm.com](http://www.winslowfarm.com)

Special Fall and Winter Hours and Rates  
Monday 10:30 to 1:30

Admission: \$15 for adults; \$10 for children 5 and up  
\$5 for children 2 to 4; Under age 2 free

We ask that you abide by all CDC Covid safety precautions, including social distancing, wearing masks and using hand sanitizer.

Follow Us On Facebook!

